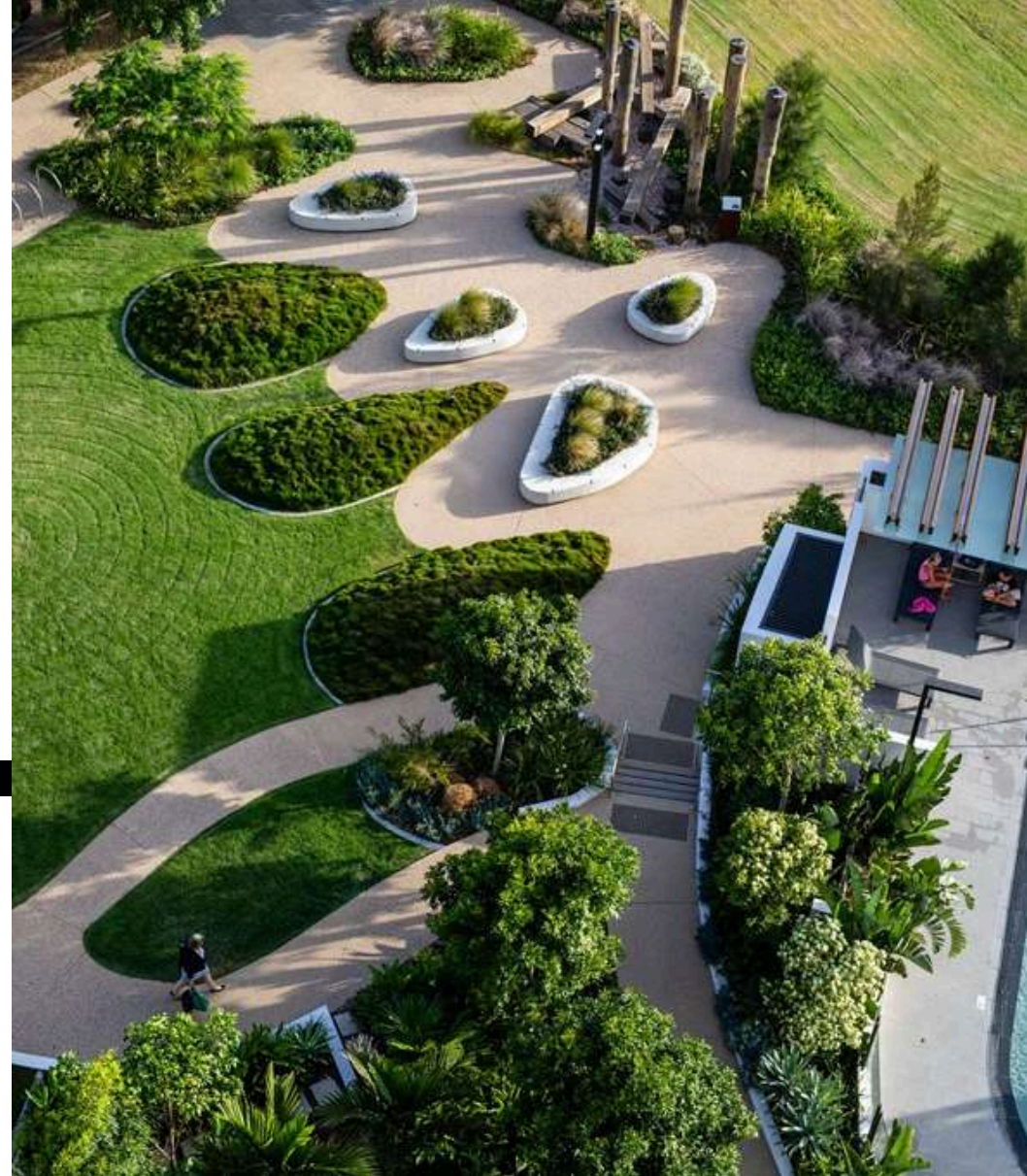


2024 CAPABILITY STATEMENT

Bland 2 Brilliant LANDSCAPES



QBCC Licence No: 1151786





AWARDS

AWARDS

Queensland Assoc. Inc.

Landscape Architecture Queensland

LANDSCAPE ARCHITECTURE QUEENSLAND CONSTRUCTION EXCELLENCE AWARDS

Landscape Architecture Queensland

CONSTRUCTION EXCELLENCE AWARDS

01	INTRODUCTION	11	UNISC MORETON BAY	21	ANZAC SQUARE
02	HERSTON QUARTER	12	BREEZE APARTMENTS		
03	KINGSFORD SMITH DRIVE	13	COMMONWEALTH GAMES VILLAGE		
04	HOME OF THE ARTS	14	BRISBANE INTERNATIONAL CRUISE TERMINAL		
05	RIVERLIGHT HAMILTON	15	ADELAIDE RIVERBANK PEDESTRIAN BRIDGE		
06	TWEED VALLEY HOSPITAL	16	REMORA ROAD		
07	SATELLITE HOSPITALS PROGRAM	17	QLD UNIVERSITY OF TECHNOLOGY		
08	443 QUEEN STREET	18	RYDGES GC AIRPORT HOTEL		
09	480 QUEEN STREET	19	THE BOATYARD		
10	FISHLANE TOWN SQUARE	20	THE STAR CASINO		



BLAND 2 BRILLIANT LANDSCAPES

Bland 2 Brilliant Landscapes has the capability to construct and deliver on time, all elements within a large commercial landscape setting. From incorporating our own design team and engineers to take a concept drawing, through to construction.

Our experienced team have completed many diverse projects, including;

- **Gold Coast Light Rail** (McDow) \$7.5 million
- **Tweed Valley Hospital** (Lendlease) \$6 million
- **Commonwealth Games Village** (Grocon) \$5.5 million
- **Kingsford Smith Drive** (Lendlease) \$4.2 million
- **Satellite Hospital Program** (Hutchinson Builders) \$4 million
- **480 Queens Street**, Brisbane (Grocon) \$3.8 million
- **Herston Quarter** (Hutchinson Builders) \$3 million
- **The Hamilton Remora Rd**, Brisbane (Shayer Group) \$2.8 million
- **Uni Moreton Bay** (Badge Constructions) \$2.6 million
- **QUT Garden Point Campus** (Leightons) \$2.6 million
- **Cruise Ship Terminal** (Hindmarsh) \$2.2 million
- **443 Queen Street** (Probuild/Hutchinson Builders) \$2.1 million
- **HOTA** (Hansen Yuncken) \$1.9 million
- **Adelaide Riverwalk Bridge** (McConnell Dowel) \$1.8 million
- **King George Square** (Kane Constructions) \$1.2 million
- **Sunshine Plaza** (Lendlease) \$1.1 million
- **China Town Mall** (ADCO) \$1.1 million
- **Brisbane Racing Club**, Eagle Farm (BRC) \$1.1 million
- **Anzac Square**, Brisbane (Kane Constructions) \$906,000
- **Liberte Apartment** (Pradella) \$750,000
- **Townsville Mall Redevelopment** (Watpac) \$750,000
- **Riverlight Hamilton** (Watpac) \$725,000
- **Gold Coast Aquatic Centre** (Watpac) \$700,000
- **Bernborough** (LendLease) \$581,000
- **Pinnacle Apartments** (Hutchinson Builders) \$650,000
- **Westfield**, North Lakes (Scentre Group) \$650,000
- **Gold Coast Airport Redevelopment** (ADCO) \$600,000
- **Inner City North State School** (Hutchinson Builders) \$482,000
- **Gold Coast Airport Hotel** (Condev) \$362,000
- **Chester & Ella** (Hutchinson Builders) \$340,000
- **The Spot** (Condev) \$314,000
- **Fish Lane** (Shape) \$292,000
- **KOKO** (Morris Property Group) \$214,000
- **Odyssey Aged Care** (Hutchinson Builders) \$160,000

Elements of Bland 2 Brilliant Landscapes' construction include;

- Suspended timber decks;
- Suspended concrete base slabs;
- Supply and installation of high grade natural stone products for all floor and wall solutions;
- Mechanical fixed vertical stone façade cladding;
- Softscape of roads and footpath verges;
- Complete construction of off form concrete insitu walls and seating;
- Source, supply, install and maintain all ex-ground trees, container plants, turf and mulch;
- Installation of greenwalls and sloping gardens;
- Water features;
- All podium and non-podium drainage;
- Source and supply project specific soil blends;
- Gabion walls;
- Architectural designed fencing and screens;
- Supply and placement of all concrete pavements;
- Construction of block retaining walls.

Above all, we at Bland to Brilliant Landscapes believe our business is built upon proven performance and honesty. We take great pride in the skill sets and ability of our staff, from estimators, project managers, tradesman and the future of our company, our apprentices.



HERSTON QUARTER

BRISBANE

Scope: Softscape and Hardscape elements, including cultivation, soil, mulch, plants, turf and Irrigation. Footing, in-situ concrete walls and seats, concrete base slabs under paving, granite paving, metal fencing, stairs, asphalt paving, broom finished and exposed concrete paths and roads, asphalt paths, brick edging, boulders and gravel.

Located adjacent to the Royal Brisbane Hospital, the Herston Quarter Heritage Precinct project included the refurbishment of heritage-listed Lady Lamington and Edith Cavell buildings, and the redevelopment of the surrounding areas into beautifully constructed public realm. Every aspect of the refurbishment was designed to have a connection to the outdoor surroundings. The stunning landscaped areas throughout the Heritage Precinct, draw people in creating opportunities for placemaking.

The landscape architects designed the public realm to have a positive psychological effect and enhance the health benefits for the people who live in, work at or visit the Heritage Precinct. Bland 2 Brilliant Landscapes successfully completed all aspects of the landscape construction, including the sourcing heritage listed trees, palms and plants. The finished landscapes contribute greatly to the timeless beauty of the Herston Quarter buildings and wider precinct.

Of note, some of the challenging and stand-out works included:

- quality finishes on insitu exposed concrete walls and seats;
- rock substrate which required coordination of pavement construction and provisions for planter build up;
- strategic logistics to protect the heritage buildings while accessing courtyards and undertaking swale construction; and
- sourcing replacement heritage listed trees, palms and plants.





HERSTON QUARTER, BRISBANE



BEFORE



AFTER



HERSTON QUARTER, BRISBANE

Bland **2** Brilliant
LANDSCAPES



KINGSFORD SMITH DRIVE

BRISBANE



Scope: Hard and soft landscape elements, including turf, soil, mulch, planting. Irrigation, supply and install of granite paving including 2,800 individually cut tapered 60mm thick granite to suit arc, concrete base slabs, Anzac memorial stone cladding & lettering, Over 5kms of softscape, including approx 150,000 plants, 400 trees and 20,000 m³ of soil. Installation of balustrading.

Landscape works involved the creation of a lush subtropical tree-lined boulevard in the centre median of the Kingsford Smith Drive corridor.

The road upgrade project included a rejuvenation of Cameron Rocks Reserve, which included the ceremonial memorial court and refurbished World War 1 memorial. This has provided improved amenity for park users, including direct access to the river.

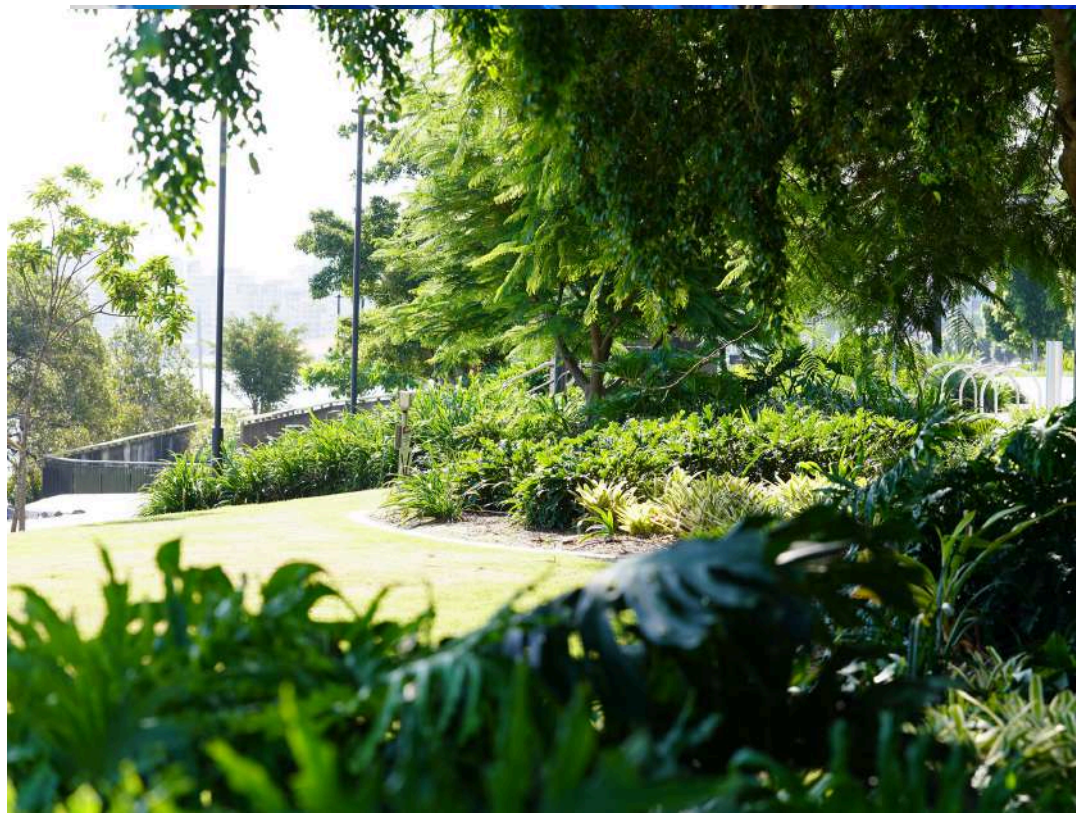
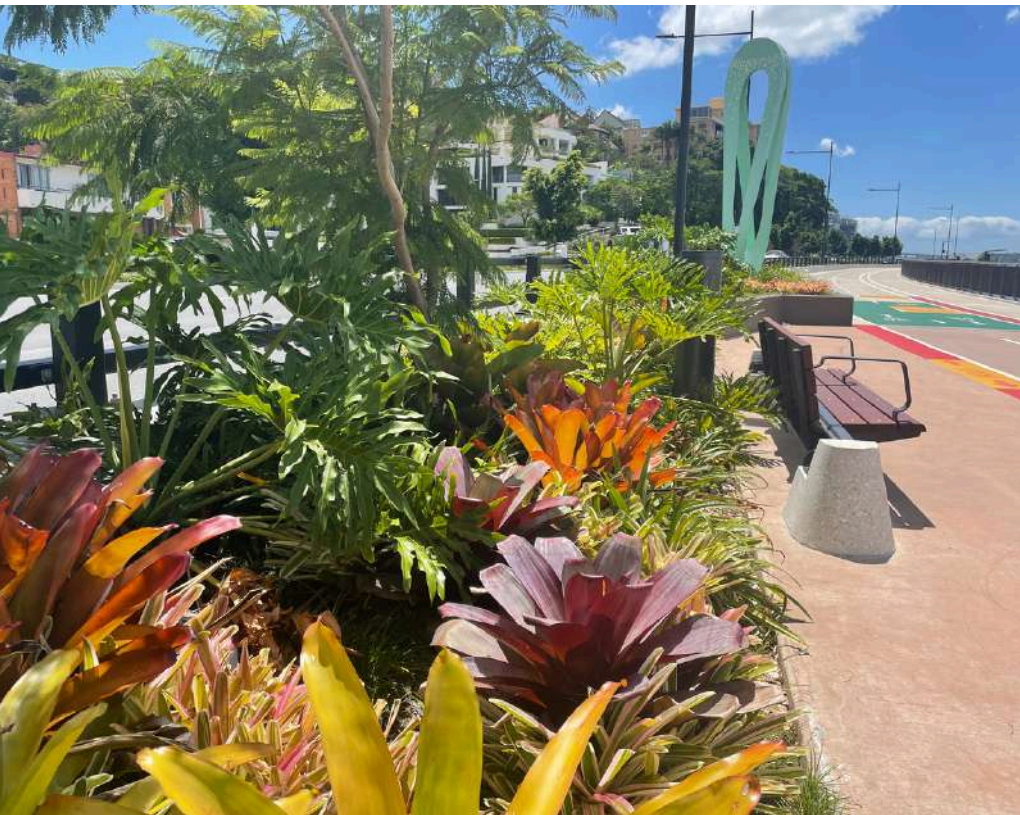
Standout and challenging works included the ceremonial memorial court, which involved 2,661 pieces of individually cut stone, used to create the iconic 'arc path' which surrounds the war memorial.

The urban and landscape design and construction for the Kingsford Smith Drive Upgrade has enhanced users' interaction with the river and created an enduring public realm that positively contributes to Brisbane's identity as a New World City.



KINGSFORD SMITH DRIVE, BRISBANE

Bland **2** Brilliant
LANDSCAPES



KINGSFORD SMITH DRIVE, BRISBANE



KINGSFORD SMITH DRIVE, BRISBANE



KINGSFORD SMITH DRIVE, BRISBANE

Bland **2** Brilliant
LANDSCAPES



KINGSFORD SMITH DRIVE, BRISBANE



HOTA HOME OF THE ARTS

GOLD COAST

LANDSCAPE
QUEENSLAND
CONSTRUCTION EXCELLENCE
AWARDS



Scope: Softscape and Hardscape elements, including turf, plants, mulch, soil, irrigation, podium gardens, bio basins, rootbarrier, artwork footings, furniture, bollards, fencing, concrete paths 3000m², concrete walls, line marking, trellis stairs, handrails and drains.

The newly completed contemporary HOTA Art gallery is home to the City of Gold Coast's extensive collection of art and cultural artefacts, and host to many local and international exhibitions.

Designed by ARM Architects, the HOTA precinct & it's landscapes was unified visually by the dynamic, organic cellular structure of the 'Voronoi', nature's most robust but delicate shape. A Voronoi diagram is a network of cells that occurs naturally in many plants and animals, even honeycombs and bubbles. It's a distinctive design motif that has determined the shapes on the walls, canopy, paths and garden beds installed by Bland 2 Brilliant Landscapes.

Stand out items included the 'Voronoi' shaped paths, concrete finishes, patterns and joints.

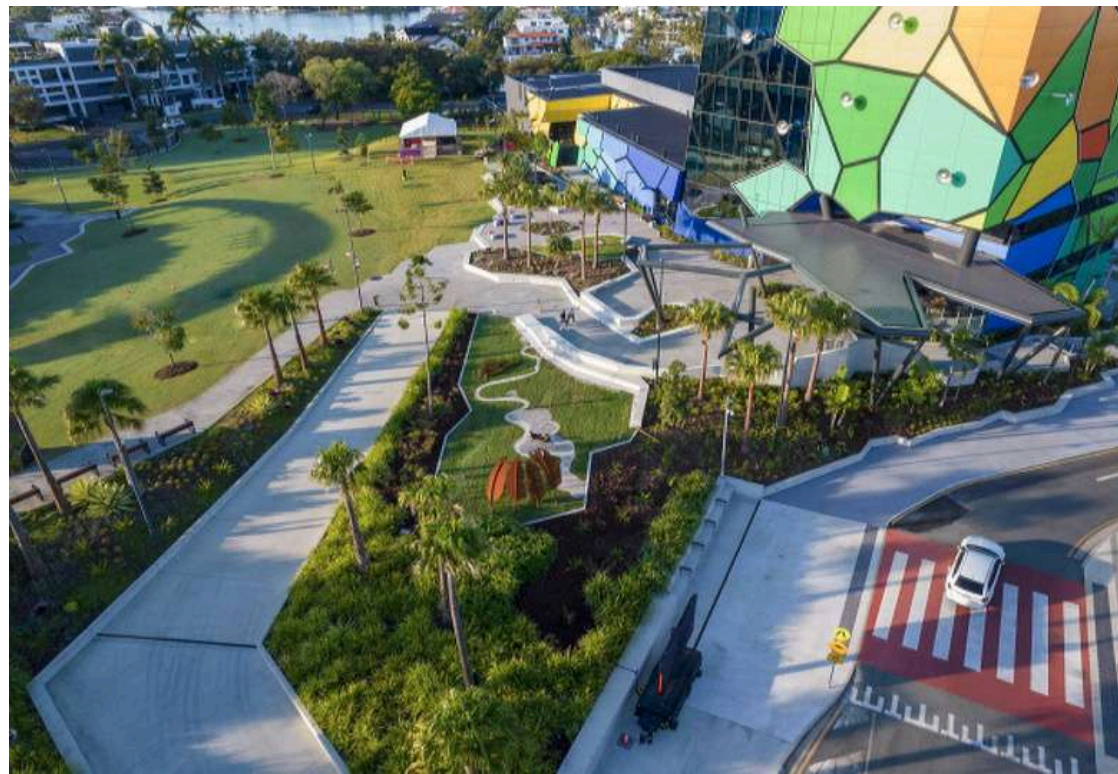
HOTA Art Gallery has already received many awards, including;

- 2020 AIA (QLD) Commendation—Urban Design
- 2019 AIA (QLD) National Award for Public Architecture
- 2019 AIA (National) FDG Stanley Award—Public Architecture
- 2019 AIA (QLD) FDG Stanley Award—Public Architecture
- 2019 AIA (QLD) Commendation—Colorbond Award for Steel Architecture



HOTA HOME OF THE ARTS





HOTA - HOME OF THE ARTS, BUNDALL



RIVERLIGHT HAMILTON

BRISBANE

Scope: Softscape and Hardscape elements

Including;

- Podium drainage
- Soil and plants
- Irrigation
- Timber to pergola structures
- Formed insitu concrete planters
- Concrete BBQ
- Supply & install solid granite blade walls
- Supply/place/finish exposed concrete paths/steps
- Source/supply/install recycled timber beams for seats & totems

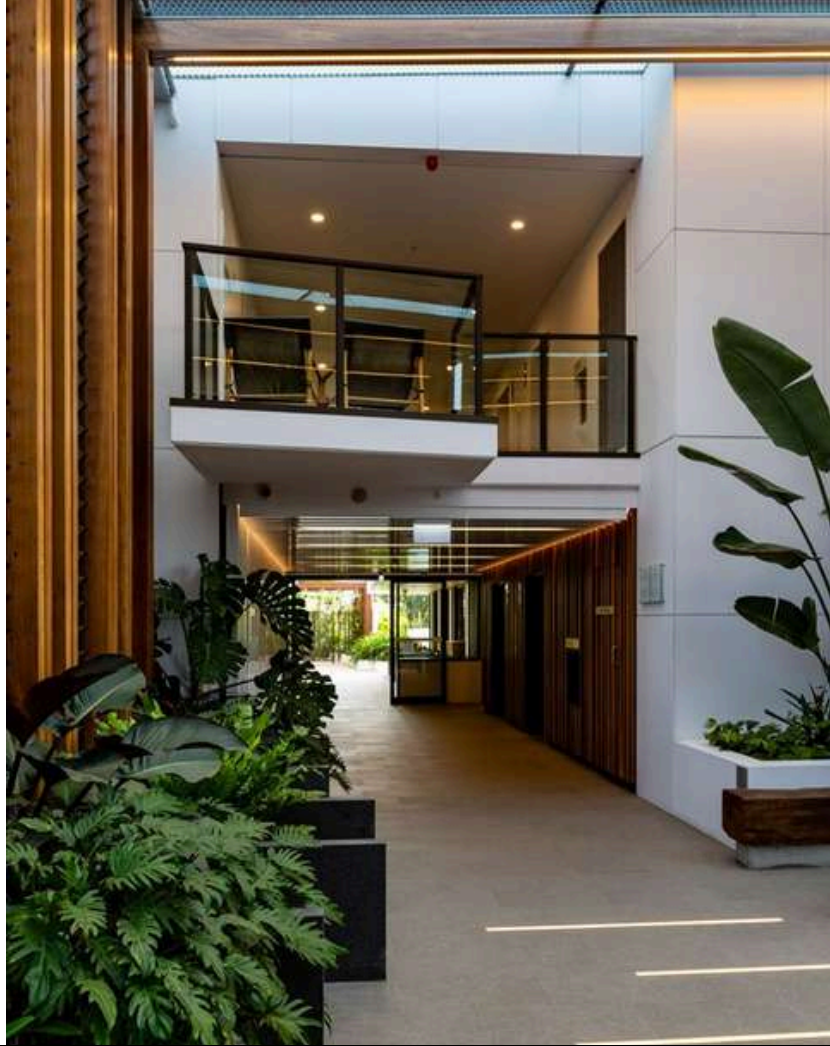


RIVERLIGHT, HAMILTON

Bland **2** Brilliant
LANDSCAPES







RIVERLIGHT, HAMILTON

Bland **2** Brilliant
LANDSCAPES



RIVERLIGHT, HAMILTON

Bland **2** Brilliant
LANDSCAPES



RIVERLIGHT, HAMILTON

Bland **2** Brilliant
LANDSCAPES



RIVERLIGHT, HAMILTON

Bland **2** Brilliant
LANDSCAPES

TWEED VALLEY HOSPITAL

KINGSCLIFF

Scope: Softscape and Hardscape elements

Works included civil bulk earthworks. Turf, gardens, plants. Blockwalls, gabion walls, artificial turf, 5000 m2 of concrete pavements, 3000 m2 of concrete pavers, furniture, steel structures and Irrigation.

The development of the South Sea Islander Reflection Park was designed in close consultation with the community; and is dedicated to recognising the history of the South Sea Islander people, and their connection to the hospital site.

“This park has truly been designed by the community; from the concept of the nautilus shell shape, the inscription in the paving and the map of the South Sea Islands in the central plaque, as well as the selection of plant species.

The park space features two drystone walls, which have been constructed using stones from walls within the hospital development area that were disassembled, with the stones archived and stored on the site until the park design was complete.





TWEED VALLEY HOSPITAL, KINGSCLIFF

Bland **2** Brilliant
LANDSCAPES



SATELLITE HOSPITALS PROGRAM

SOUTH EAST QUEENSLAND

The Satellite Hospitals Program (SHP) is a Queensland Government commitment to deliver seven new facilities to support public healthcare delivery in rapidly growing communities across South East Queensland.

The locations for the new Satellite Hospitals included

- Bribie Island
- Caboolture
- Kallangur
- Eight Mile Plains
- Redlands
- Ripley
- Tugun

All seven sites have been chosen to provide better access to healthcare for local communities, in convenient settings, without having to travel to major hospitals for care.

Scope: Softscape and Hardscape elements

Works included gardens, drainage, turf, planting, concrete edge, rubber softall, basalt steppers, excavation, concrete paths, tactiles, acoustic fence, balustrade fence, furniture and bollards, seats and tables, log steppers, bins, bike racks, garden sheds, in-situ concrete seats and irrigation.



SATELLITE HOSPITALS PROGRAM, SOUTH EAST QUEENSLAND

Bland **2** Brilliant
LANDSCAPES



443 QUEEN STREET

BRISBANE

443 Queen St heralds a new generation of design for subtropical living as Brisbane's first premium subtropical residential tower, consisting of 264 high-quality residential apartments with unprecedented views across Brisbane and back towards the city.

Scope: Softscape and Hardscape elements

Including:

- Soil
- Plants
- Mulch
- Drainage cell
- Void former
- Pots
- Drainage



443 QUEEN STREET, BRISBANE

Bland **2** Brilliant
LANDSCAPES



443 QUEEN STREET, BRISBANE

Bland **2** Brilliant
LANDSCAPES



443 QUEEN STREET, BRISBANE

Bland **2** Brilliant
LANDSCAPES



480 QUEEN STREET

BRISBANE

Scope: Softscape and Hardscape elements

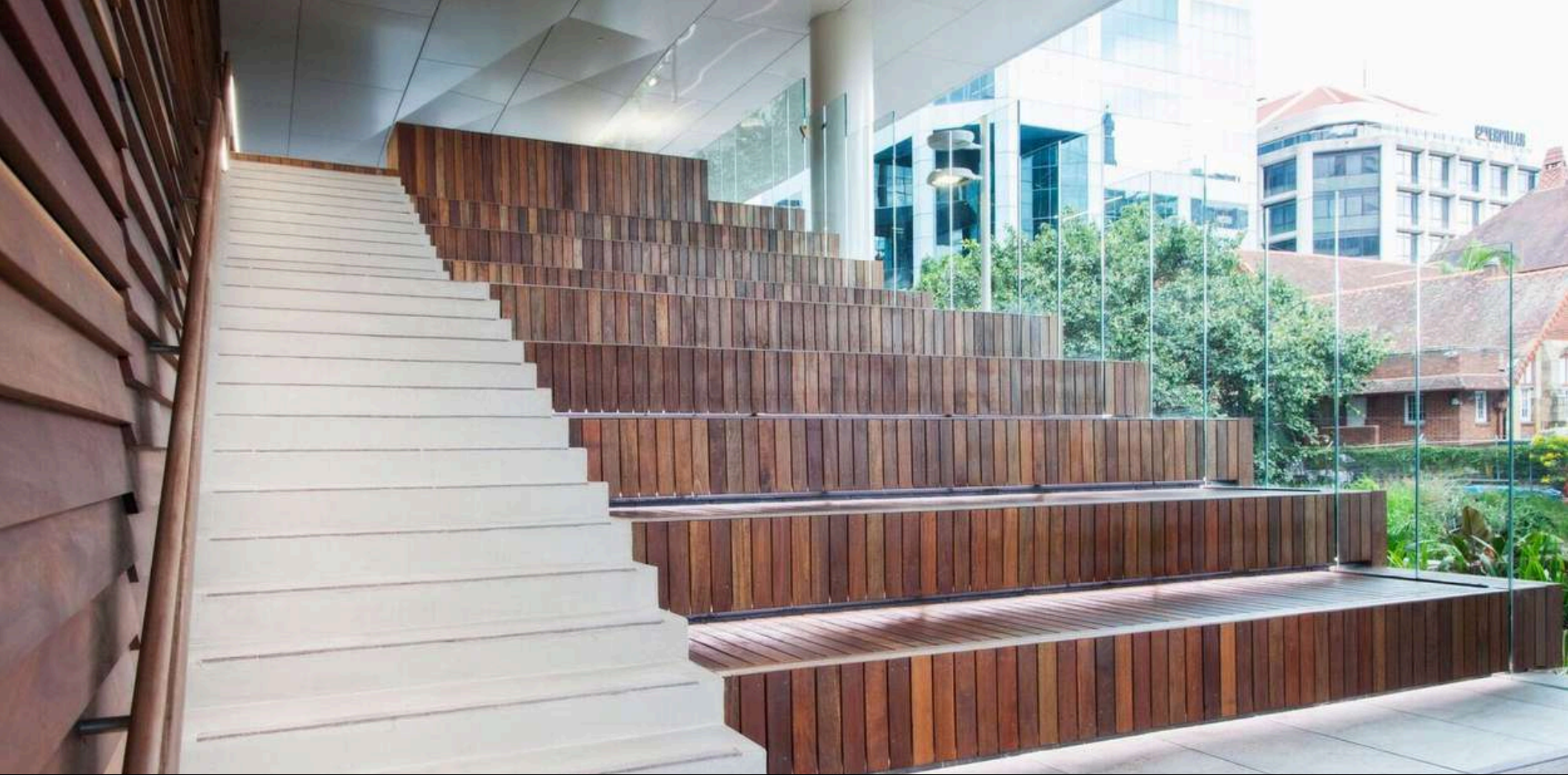
Including;

- The design/engineer/supply & fix granite vertical facade
- Blockwork
- Concrete
- Podium drainage
- Granite podium paving & cladding (supply & install)
- Podium soil mix supply & install
- Supply & install all plants
- Source/contract grow/supply/install vertical & raking gardens
- Supply/install/engineer timber decks
- Demo and remove existing footpaths, supply/place/finish/hone concrete to footpaths



480 QUEEN STREET, BRISBANE

Bland **2** Brilliant
LANDSCAPES



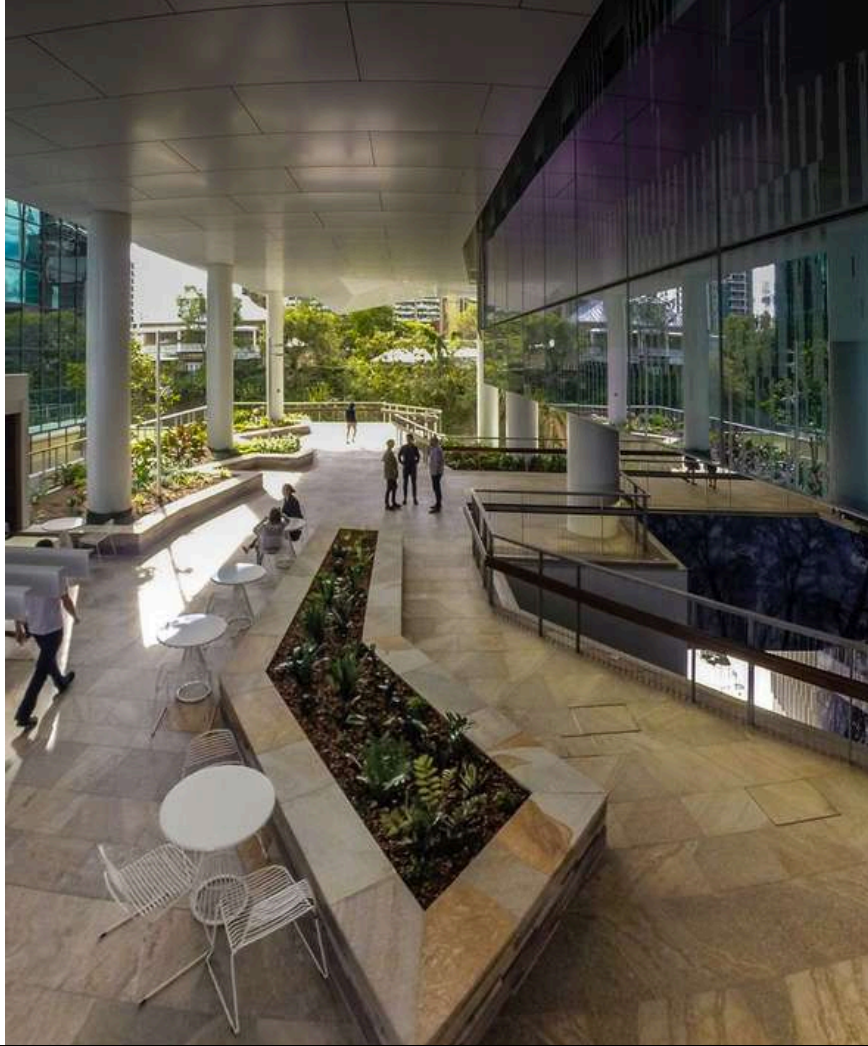
480 QUEEN STREET, BRISBANE

Bland **2** Brilliant
LANDSCAPES



480 QUEEN STREET, BRISBANE

Bland **2** Brilliant
LANDSCAPES





480 QUEEN STREET

480 QUEEN STREET, BRISBANE

Bland **2** Brilliant
LANDSCAPES



FISH LANE

BRISBANE



Scope: Softscape and Hardscape elements, Including Gardens, edging, plants, irrigation and paving.

The Fish Lane project transformed a dark and disused car parking area in Brisbane's South Bank into a lush entertainment, hospitality, and arts destination for the city.

The project is a standout for many reasons, including the delivery of a "lost landscapes" narrative that was implemented through the planting of more than 3,500 low-light-tolerant species.

The Fish Lane redevelopment now provides user groups with a truly unique green space that offers varied experiences and elevates landscape architecture.

Fish Lane has already received many awards, including;

- 2021 AILA National Award of Excellence for Civic Landscape
- 2021 AILA QLD Award of Excellence for Civic Landscape
- 2021 'Built Urban Design' category of the World Landscape Architecture awards (more than 400 submissions for the awards that promote the work of landscape architects globally.)
- 2018 Urban Design Landscape Architecture Award at the 2018 National Landscape Architecture Awards,



FISH LANE, BRISBANE

Bland ² Brilliant
LANDSCAPES



FISH LANE, BRISBANE

Bland **2** Brilliant
LANDSCAPES



↑
SOUTHSIDE

←

MELBOURNE STREET
Woolworths Metro
KIKI
BAR BRUTUS
DIGITALB
Woolworths Metro



UNISC MORETON BAY

SUNSHINE COAST

Scope: Softscape and Hardscape elements

Including;

- All hard and softscape elements
- Tree transplanting
- gardens, turf, grass seed, edges
- Boulders
- Root barriers, drainage and pits
- Plants
- Irrigation
- Gravel maintenance strip
- Concrete, honed, salted, exposed and broom finishes
- Bushmates bitumen
- Urbanstone pavers
- In-situ concrete walls
- Furniture including bike racks, bollards, seats, drink fountains and bbqs.



UNISC MORETON BAY, SUNSHINE COAST

Bland **2** Brilliant
LANDSCAPES



BREEZE APARTMENTS

WEST END

Scope: Softscape and Hardscape elements

Including;

- All hard and softscape elements
- Exposed concrete finish ground level
- Street Furniture
- Podium drainage
- Irrigation
- Podium soil mixes
- Level 8 composite timber decking, including support structure
- Bondek & honed coloured concrete
- Concrete stairs
- Astro Turf on rubber softfall
- Supply/install BBQ's
- All plants and mulch





COMMONWEALTH GAMES VILLAGE

GOLD COAST

Scope: Softscape and Hardscape elements

Including;

- Complete hard and softscape of the entire Games Village
- Blockwork, Bondek, Voidformers
- Timber decks
- Powder Coated steel arbours
- Insitu formed concrete seating
- Low level aluminium balustrades, and all fencing
- Gabion Walls up to 5m high
- Concrete Pathways
- Supply & Install 1000m² granite pavers on jacks
- Supply & install 10000m³ of soil
- including conveyors, all machines
- Subsoil drainage
- Source/supply/plant over 100,000 plants
- Supply/install mulch & turf
- Engineering of all hardscape elements



PARKLANDS COMMONWEALTH GAMES VILLAGE, GOLD COAST

Bland **2** Brilliant
LANDSCAPES



PARKLANDS COMMONWEALTH GAMES VILLAGE, GOLD COAST

Bland **2** Brilliant
LANDSCAPES



PARKLANDS COMMONWEALTH GAMES VILLAGE, GOLD COAST

Bland **2** Brilliant
LANDSCAPES



BRISBANE INTERNATIONAL CRUISE TERMINAL

BRISBANE

Scope: Softscape and Hardscape elements

Including;

- Turf
- Gardens
- Timber Edging
- Plants
- Hydroseeding
- Artificial Turf
- Coloured concrete paths
- Concrete Walls and seat walls
- Furniture



BRISBANE INTERNATIONAL CRUISE TERMINAL (BICT), BRISBANE



BRISBANE INTERNATIONAL CRUISE TERMINAL (BICT), BRISBANE





ADELAIDE RIVERWALK BRIDGE

ADELAIDE

Scope: Softscape and Hardscape elements

Including;

- Source granite to match existing
- Process all granite including water-feature elements
- Design, manufacture vacuum lifting equipment to lift granite stone 200Kgs to 2000kgs
- Waterproof/test all podium slabs
- Place and finish all concrete podium slabs to allow for installation of 40mm granite pavers
- Supply & lay over 3500m² of granite pavers, treads & risers, plus installation of feature stone through out water-feature



[Watch on YouTube](#)

ADELAIDE RIVERBANK PEDESTRIAN BRIDGE SOUTH AUSTRALIA

Bland **2** Brilliant
LANDSCAPES





ADELAIDE RIVERBANK PEDESTRIAN BRIDGE SOUTH AUSTRALIA



THE HAMILTON

BRISBANE

Scope: Softscape and Hardscape elements

Including:

- Blockwork, Bondek, Voidformers, concrete base slabs
- Supply/lay granite pavers
- Form/placed & finish off-form insitu concrete planter walls
- Podium drainage/podium soils/mulches/ turf/plants
- Asphalt driveway
- Furniture items
- Irrigation



THE HAMILTON ON REMORA ROAD, BRISBANE

Bland **2** Brilliant
LANDSCAPES



QLD UNIVERSITY OF TECHNOLOGY

BRISBANE

Scope: Softscape and Hardscape elements

Including;

- All demolition / removal of existing concrete paths, main driveway including around and within Old Government House Heritage Building
- Supply/Place/Finish all concrete base slabs to suit 40mm paving. Approx 3000m²
- Supply and lay all granite paving approx 3000m²
- Design, Engineer, manufacture, supply and install timber decking including galv structure





RYDGES GC AIRPORT HOTEL

GOLD COAST

Scope: Softscape and Hardscape elements

Including;

- Irrigation
- Soil
- Mulch
- Plants
- Turf
- Drainage cell
- Decorative gravel
- Artificial turf
- Metal edging
- Timber blades to wall
- Artificial Turf





THE BOATYARD

BRISBANE

Scope: Softscape and Hardscape elements.

Including;

- Drainage cell
- Geofabric
- Soil
- Irrigation
- Turf
- Edging
- Granite paving
- Trellis
- Honed concrete entry steps and landings









THE BOATYARD

BRISBANE

Garden Lawn Bar

Scope:

- Removal of existing turf lawn (1000m2) and approx 300m3 of soil to suit new levels and subgrade
- Install new power and water services
- Design/engineer/place & finish concrete base slab
- Supply & install granite bollards
- Supply & install rubber softfall / 35mm astro turf

Centenary Park

Scope:

- Subgrade and remove existing pathways, landscaping etc
- Regrade entire park to suit new level / terraces
- Form/place/finish insitu concrete seating walls
- Form/place/finish concrete pathways/ base slab for pavers
- Concrete garden edging
- Supply/install 300m2 granite pavers
- Supply/ plant 6300 140mm/200mm
- Turf/Mulch supply & install approx 6300m2
- Supply & install park furniture
- Contract & manage new electrical including all new park lighting, power supply etc

Porte Cochere

Scope:

- Supply/install granite paving & cladding to entrance of Casino

INNER CITY STATE SCHOOL, BRISBANE



THE STAR CASINO, GOLD COAST

Bland **2** Brilliant
LANDSCAPES



ANZAC SQUARE

BRISBANE

Scope: There was a large portion of demolition, hard and soft landscaping, services and structural works, including supply and lay all granite pavers, arc pavers, custom granite seats, stairs, tactiles

The redevelopment of Anzac Square involved the restoration and enhancement works to the main parkland, with the main objective of the project to conserve and enhance the public presentation, access and amenity of the square to re-establish its significance as Queensland's preeminent memorial in Brisbane.

Existing heritage stone was re-used where possible, and an alternative stone for pavers which provided the client with significant cost savings. An innovation by the design team consisted of the process to set the pavers. The semi-circle was surveyed into a CAD file, and calculated into individual radiuses to suit irregular shapes. These were then sent to the paver manufacturer, where the pavers were cut individually at these different radiuses and labelled to reflect where each piece was to be laid. This resulted in a significant saving on both program and time for the client.

The park's role as a green retreat within the city was solidified with wide expanses of lawn and carefully positioned Araucaria columnaris delivering shade over the new seating.



ANZAC SQUARE, BRISBANE



ANZAC SQUARE, BRISBANE



ANZAC SQUARE, BRISBANE

Bland **2** Brilliant
LANDSCAPES



ANZAC SQUARE, BRISBANE

Bland **2** Brilliant
LANDSCAPES



ANZAC SQUARE, BRISBANE

Bland **2** Brilliant
LANDSCAPES



29 Hutchinson Street, Burleigh Heads
Queensland, Australia, 4220

Phone: (07) 5536 8007

Email: carl@bland2brilliant.com.au

www.bland2brilliant.com.au

